

Cerebral Spinal Fluid

Liquid Light

Larry B.Wallace, O.D.,Ph.D.,

CSO June 2021

# Primary Respiratory Mechanism

William Garner Sutherland, D.O., 1939

Fluctuation of cerebral fluid

Inherent motility of brain and spinal cord

Mobility of intracranial, intraspinal membranes, and cranial bones

Involuntary mobility of the sacrum between the ilia

Respiration is the exchange of gases and fluids that are chemically and electrically charged causing a dynamic interchange with every cell with rhythmic pulsations

Integration through the fluid system of total body physiology by the cerebral spinal fluid via hydrodynamics. Responsible for the organization of the organism via the nervous system

CSF is “ The Breath of Life”

“

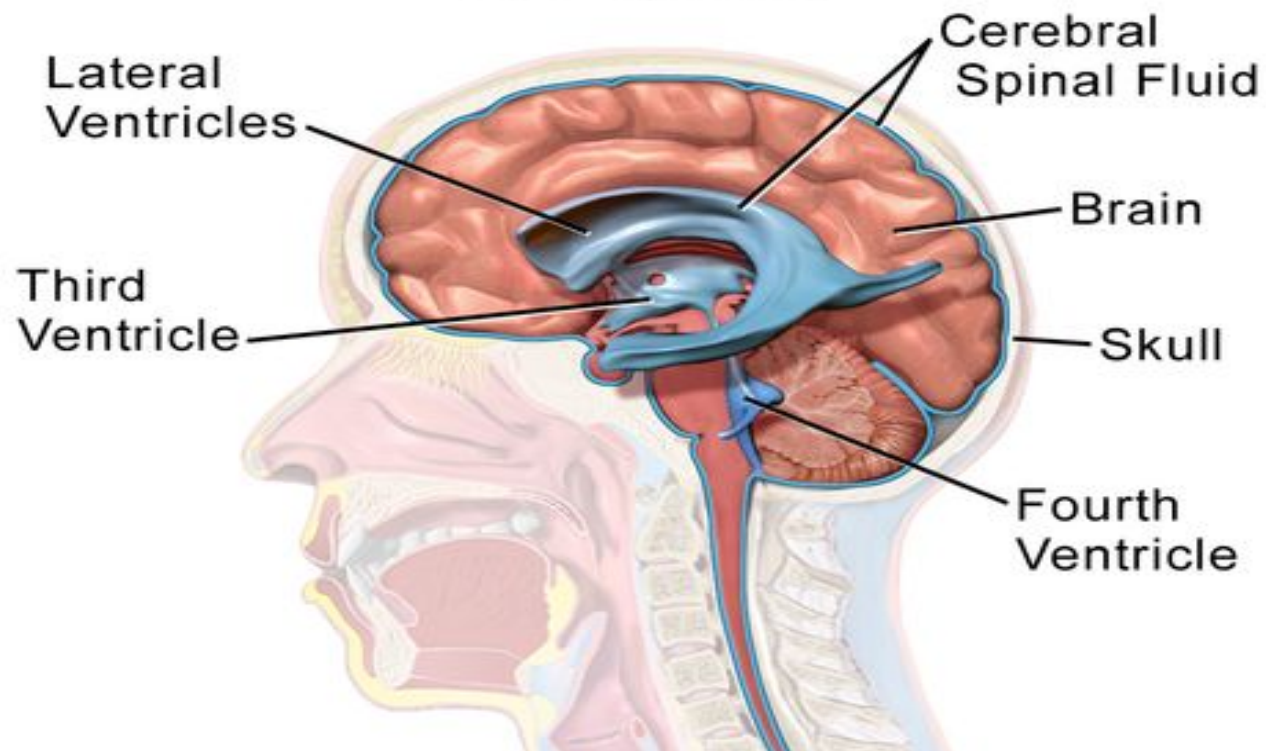
# The Brain and Water

10 billion neurons interconnected with 1000 billion junctures

Brain is 73% water floating in CSF **which** protects the brain tissue from injury, CSF is 99% water

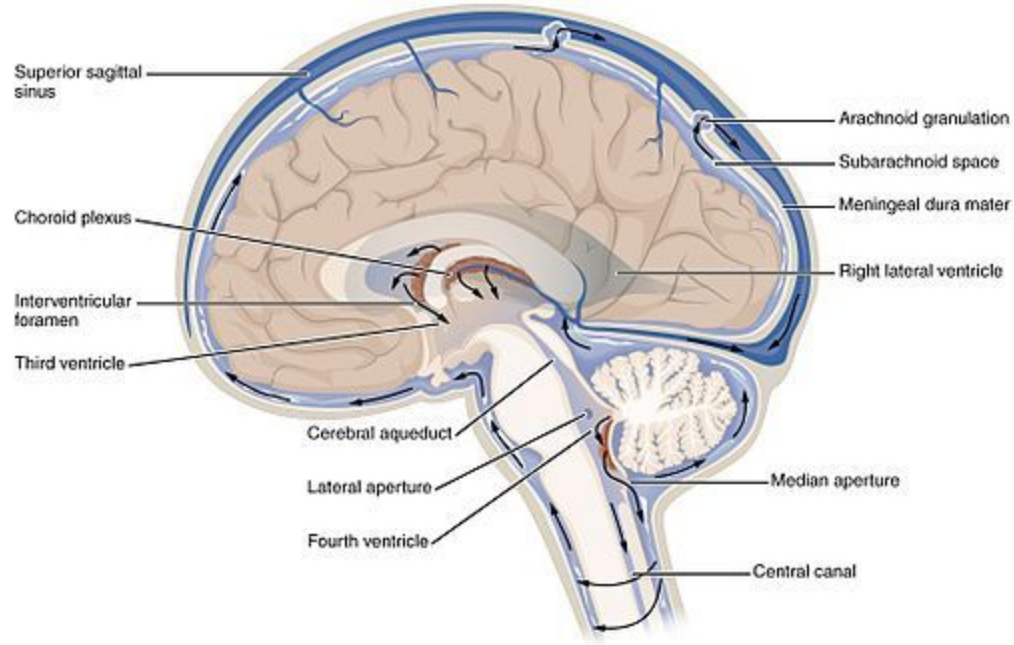
The CSF maintains the electrolytic environment of the central nervous system (CNS), influences systemic acid-base balance, serves as a medium for the supply of nutrients to neuronal and glial cells, functions as a lymphatic system for the CNS by removing the waste products of cellular metabolism( through the subarachnoid spaces), and transports hormones, neurotransmitters, releasing factors, and other neuropeptides throughout the Cranium<sub>us</sub>.

## CSF System



# CSF Bathes the CNS

C



# The Choroid

Produces CSF in brain

Functions: nourish and waste removal into the lymphatics

Thermoregulation with melanin

Changes in thickness change fovea for accommodation / emmetropization

Intrinsic neurons controlled by the ANS

Hormonal secretions

# Water the Essence of Life

Water transports nutrients, and waste but also carries the energy that drives biochemical processes by storing light: human photosynthesis

The fourth phase of water with its Exclusion Zones is the liquid crystal matrix that creates electrons and protons by using stored photons. (Gerald Pollack)

Water stores energy in two modes: order and charge separation, with electrons acting like a battery

Like charged entities can attract each other: negative-negative mediated by unlike charges that gather in between

The ability of water to hold bioelectric charge is the key to all life process (Mae Wan Ho)

Communication foundation in the liquid crystal matrix

# Cerebral Spinal Fluid

CSF is produced primarily in 4 Ventricles .The 3rd is lined by the the diencephalon consisting of the thalamus, hypothalamus, pituitary and pineal glands

The CSF circulates inside the spinal cord, and surrounds all the cranial nerves

It constantly being created to replenish the CSF as it drains into the lymph system,with 3 main tides



# CSF Tides

Short tide 8-12 cycles a minute

Mid tide 1-3 cycles a minute

Long tide 100 per seconds : producing centripetal and centrifugal forces

Forces create biomagnetic and bioelectric motion and waveforms that organize quantum level fields of light( liquid light) These fields guide physiology

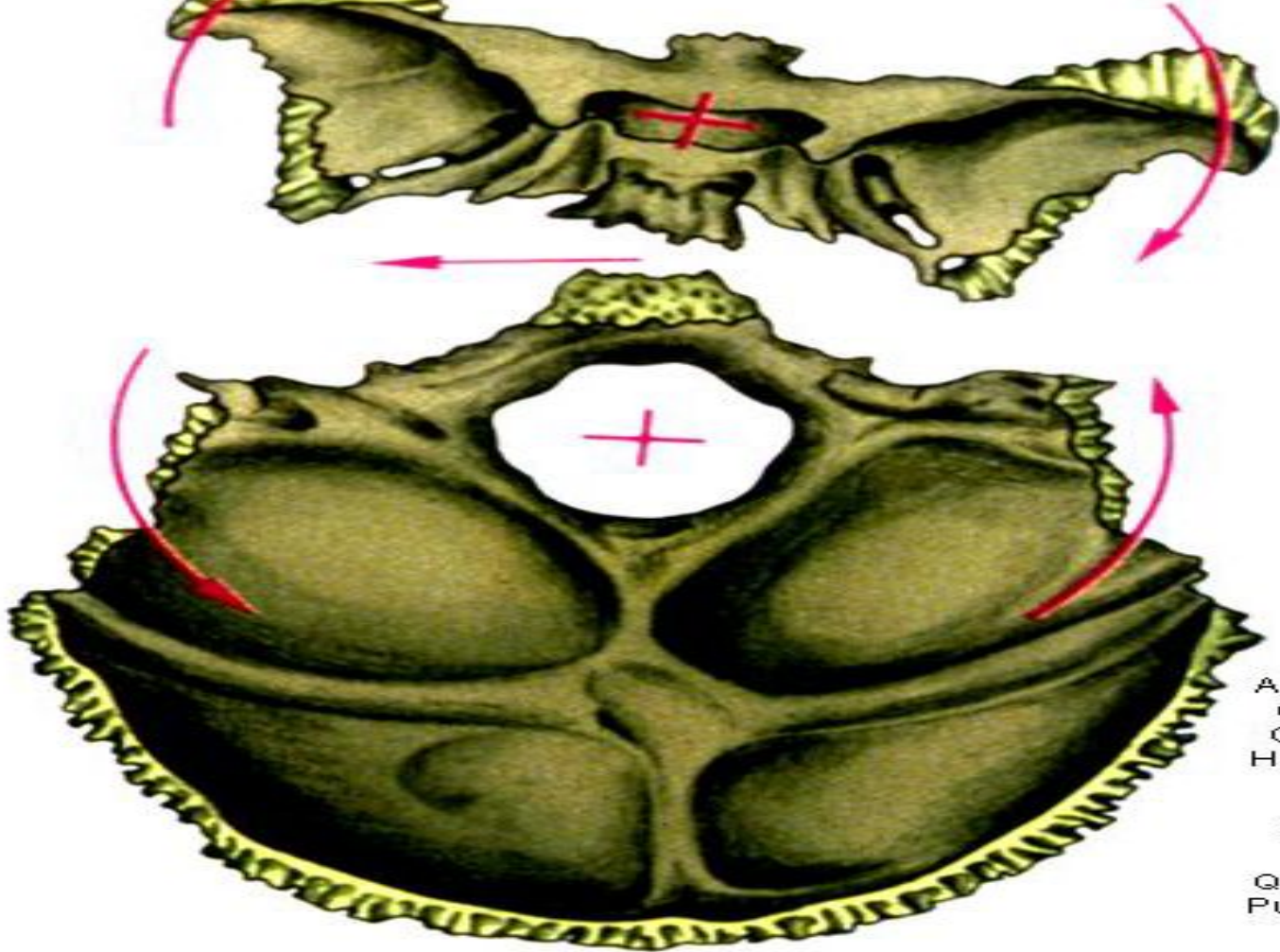
Vortices of the CSF also structure the water

Spitler said similar forces exist in the blood

## The cranial bones

The bones are continually shifting in various positions including flexion and extension and are easily affected by posture , CSF flow and any trauma creating lesions  
Lesions are alterations in normal position or motions of the bony tissues of the cranium

The CSF circulation is oscillating at different frequencies which are linked the breath, heart rate variability, mid brain frequency waves called C waves which relate to whole brain wave oscillations that relate to heart rate variability

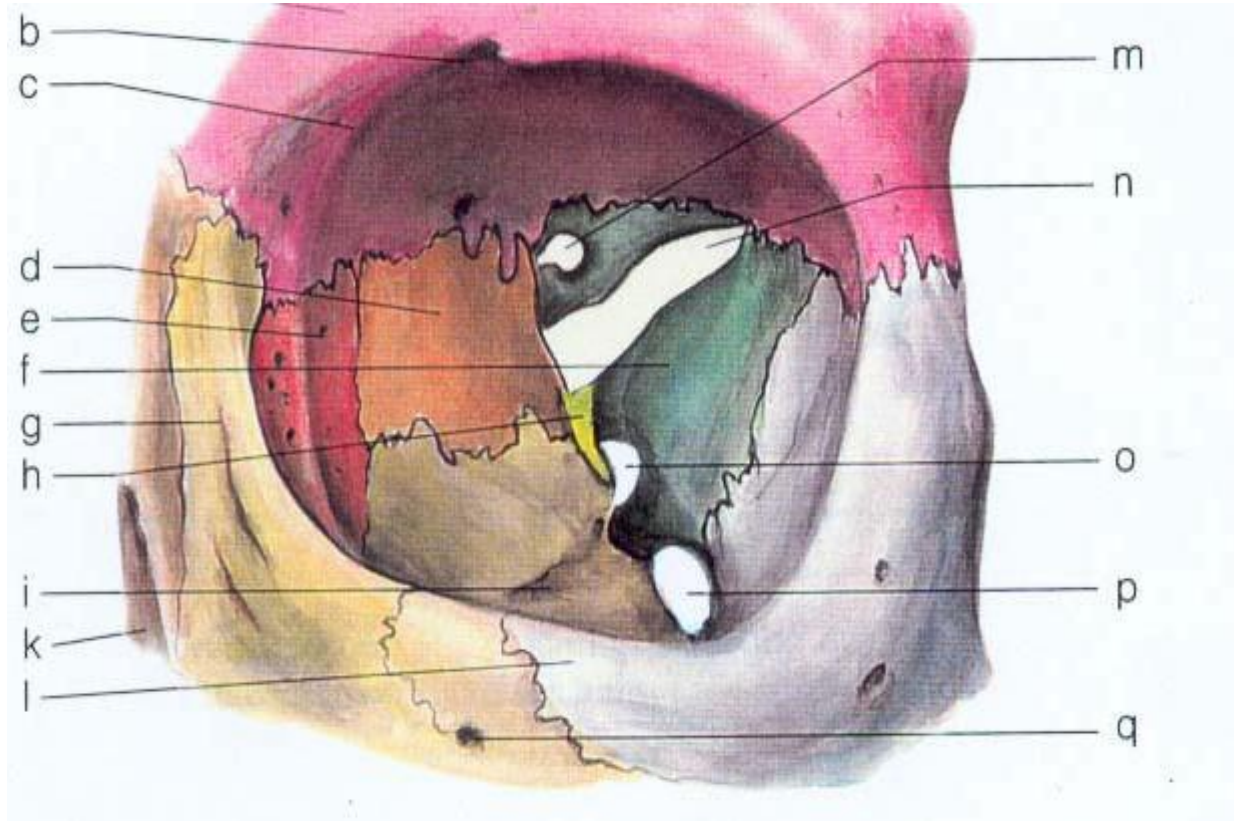


Adapted from  
Orthopedic  
Gnathology,  
Hockel, J., Ed.  
1983.  
With  
permission  
from  
Quintessence  
Publishing Co.

# Coherence Protocol - Cranium

- The **sphenoid** is the anchor for five of the six muscles controlling each eyeball (the ocular righting mechanism).
- The **temporal** bone houses the semi-circular canals (the vestibular righting mechanism).
- The **occiput** provides attachment for the four pair of highly-innervated capitis muscles in the suboccipital triangle (perception - the head-on-neck righting reflex).

# Bones of the Orbit



# Cranial Sacral Fluid and The Eye

- The eye, which is a fluid organ, sends and receives impulses from the environment. It is
- embedded in a cavity, whose form is decisive for the form and function of the eye.

All structures which make up the soft bed of the eye are fluid, which is well-supplied with blood and water

- all suspensory and supportive structures of meninges and fascias, all these structures
- depend on the activating force of the primary respiration mechanism.

# Stasis of the CSF Compromises Brain Functions

Cranial strains and fixations affect CSF circulation and cranial nerve function.

Adjustments to correct strains result in treatment of a wide range of ocular problems

These include phorias, ductions, conditions like dry eyes, strabismus, refractive errors such as myopia, hyperopia and astigmatism.

Bayer study of myopia reversal and IOP regulation

# Cerebral Stasis and Clinical Significance

Optic nerve compression with enlarged blind spots and reduced nerve flow

Cardiovascular, respiratory, and vasomotor influences, Ph, lymphatics, electrolytes, vertebral subluxations, chord and dural tension, and increases sympathetic nerve tone.

Stasis is mainly treated by palpation to restore mobility or correct cranial bone position that allow for a reorganization of the CSF flow

Palpation can also increase the force and potency of the tides to increase reorganization

Syntonic phototherapy restores balance in the ANS and neuroendocrines secreted into the CSF in the diencephalon ( third ventricle)

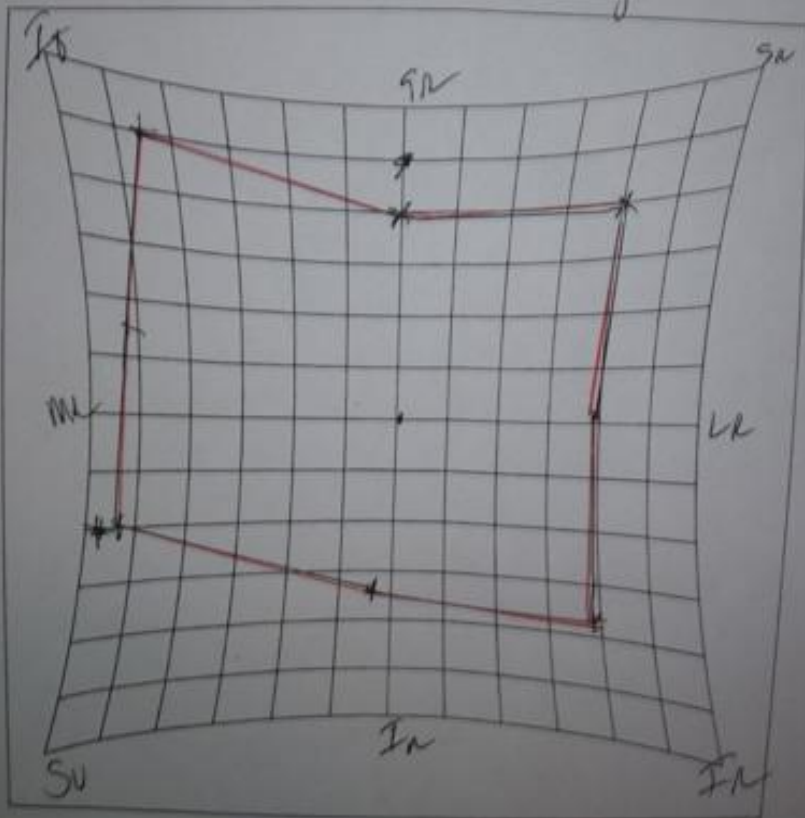


## Focal Syntonics

- Application of Syntonic colors at the insertion point in each extraocular muscle and to influence each cranial nerve.
- This also results in shifting the cranial bones, dura mater from the occipital bones to the base of the spine.
- Postural shifts and restoration on balance is frequently seen

Patient Name Cyan Gv46  
Date 2-9-12  
Test Administrator: \_\_\_\_\_

Field vs  
Junc on vis



# Right SO and Left SR



# Results

- Changes in phorias and range of movement in the EOM's
- Alteration of balance and posture
- Changes in binocular ranges of motion and fusion
- Visual Field expansions with decreased blind spots related to Dural torque
- Changes in the cranial bones including jaw and alignment of teeth

# Photobiomodulation

Deliver infrared light in the brain

Treatments with laser for Parkinson's, Alzheimer's. and TBI is ongoing

Water may be powerful pathway as structured water has peak absorption in the infrared at 3000 nm, which has deep penetration

Delta Laser with multi radiance stimulation of infrared, magnetic field, LED colors and ultrasound

# Liquid Light

Water and Light are the foundation of all Life

# References

Bayer Study

[Altern Ther Health Med](#). Author manuscript; available in PMC 2010 Mar 19.

*Published in final edited form as:*

Altern Ther Health Med. 2009 May–Jun; 15(3): 54–60.

PMCID: PMC2842089

NIHMSID: NIHMS183250

PMID: [19472865](#)

The Fourth Phase of Water, Gerald Pollack, Ebner and Sons ,2013

Foundations in Craniosacral Biodynamics, Franklyn Sills, North Atlantic Books, 2011

Osteopathy in The Cranial Field, Harold Magoun, The Cranial Academy, 1976, 2011

## **Cerebral Spinal Fluid Stasis and Its Clinical Significance**

[James M. Whedon](#), DC