

Light as Medicine – The Future is Here

CSO 2022

Dr. Cathy Stern, OD, FCOVD, FNORA, FCSO

1

1

Disclosure Statement:

Nothing to disclose

2

Light and Health

Light is important for human health.

Lighting in our current built environment generally provides light for visibility at the expense of our circadian system.

This will be an overview of current knowledge and research into light and health including recommendations for our patients to better balance the twin needs of light for sight with lighting to support our circadian system.

© 2022 Dr. Cathy Stern, OD, FCOVD, FNORA, FCSO

3

3

Chronobiology

Biological rhythms are cyclic changes influenced by exogenous factors and endogenous rhythms

Any biological rhythm with a periodicity of approximately 24 hours is called a circadian rhythm

We have circadian oscillators in all cells of the body

© 2022 Dr. Cathy Stern, OD, FCOVD, FNORA, FCSO

4

4

Circadian Rhythm (CR)

Circadian rhythms are generated by an internal clock or pacemaker

They persist in the absence of exogenous rhythms

The internal clock that regulates the circadian rhythms is synchronized or entrained to the light-dark cycle by external stimuli called Zeitgebers (time givers) which coordinate our internal clocks

The entraining agents can reset or phase shift circadian rhythms (phase advance and phase delay)

Our principal Zeitgeber is Light

© 2022 Dr. Cathy Stern, OD, FCOVD, FNORA, FCSO

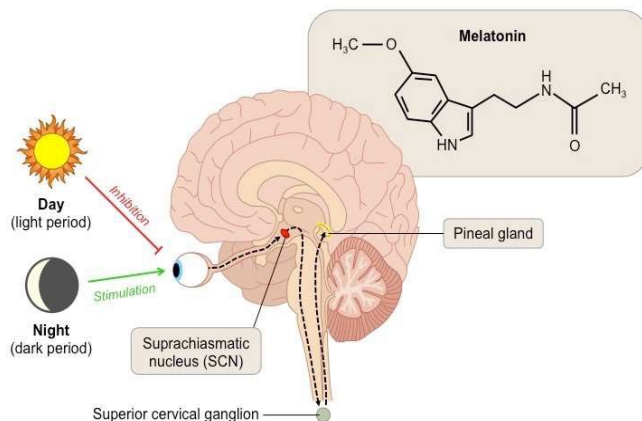
5

5

Pacemaker or Circadian Clock

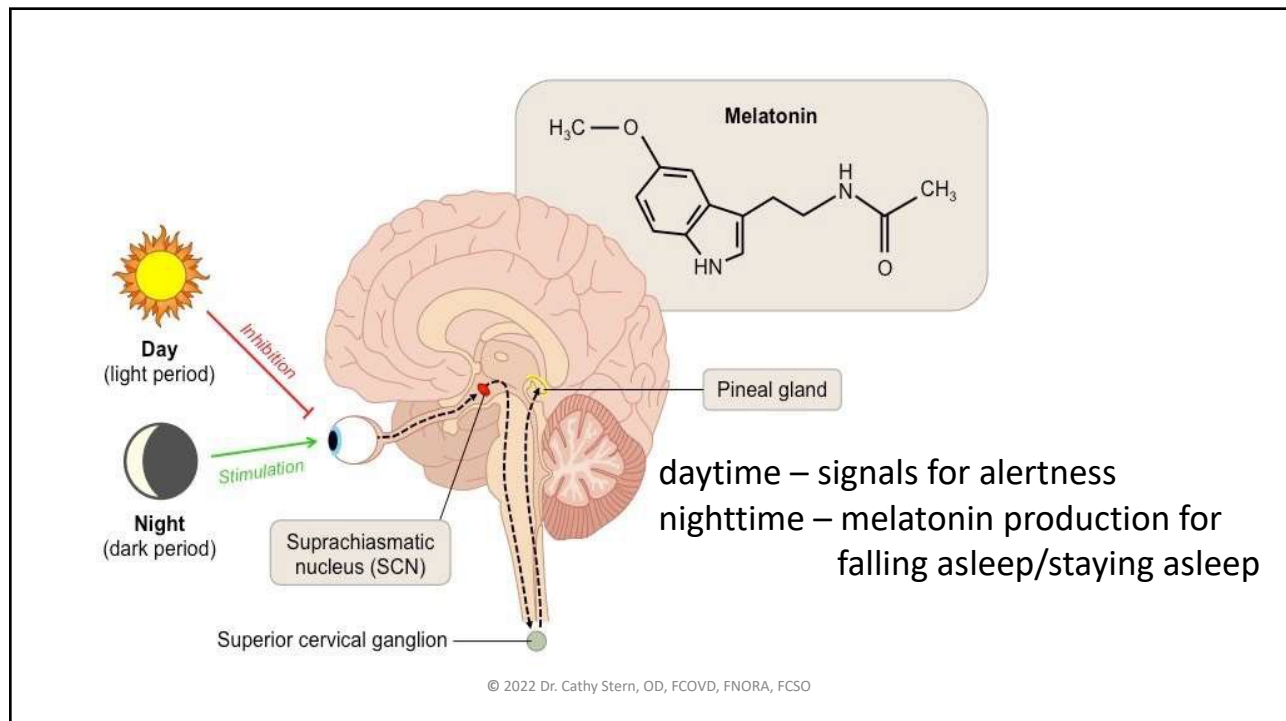
Pacemaker is located in the suprachiasmatic nuclei (SCN) of the hypothalamus in the brain

The SCN is the major site of termination of the photic entrainment pathway - the retinohypothalamic tract (RHT)



© 2022 Dr. Cathy Stern, OD, FCOVD, FNORA, FCSO

6



7

Retina

Intrinsically photosensitive retinal ganglion cells or ipRGCs contain the photopigment Melanopsin

Melanopsin cells in mammals are specialized for

- measuring ambient illumination
- contributing to visual discrimination
- drive a variety of physiological responses including
 - synchronization of circadian clocks to light-dark cycles
 - regulation of pupil size
 - modulation of sleep
 - suppression of pineal melatonin production

© 2022 Dr. Cathy Stern, OD, FCOVD, FNORA, FCSO

8

8

Retino-Hypothalamic Tract (RHT) and Suprachiasmatic Nucleus (SCN)

RHT is a photic neural input pathway

The origin is the ipRGCs which contain the photopigment melanopsin

The axons of the ipRGCs belonging to the RHT project to the SCN via the optic nerve and optic chiasm

The suprachiasmatic nuclei receive and interpret information on environmental light, dark and day length for entrainment of the “body clock”

SCN nuclei direct the pineal gland to secrete the hormone melatonin

© 2022 Dr. Cathy Stern, OD, FCOVD, FNORA, FCSO

9

9

Retina > RHT > SCN > Melatonin in Pineal Gland

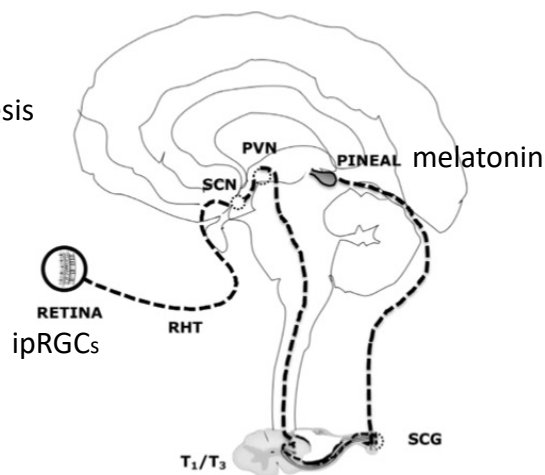
Neural control of pineal melatonin synthesis

RHT: retinohypothalamic tract.

SCN: suprachiasmatic nucleus

PVN: paraventricular nucleus.

SCG: superior cervical ganglion



© 2022 Dr. Cathy Stern, OD, FCOVD, FNORA, FCSO

10

10

Functions of the Pineal Gland

Production of Melatonin

Cardiovascular Health - melatonin produced by the pineal gland can have a positive impact on your heart and BP

Mood Disorders - a lower pineal gland volume may increase your risk of developing schizophrenia and other mood disorders

Cancer - a recent study on rats found evidence that lowering pineal gland function through overexposure to light led to cellular damage and increased risk for colon cancer

© 2022 Dr. Cathy Stern, OD, FCOVD, FNORA, FCSO

11

Melatonin Receptors

Highest density of receptors in the SCN, anterior pituitary and retina

Melatonin enhances GABA_A receptor function in SCN which may be responsible for the regulatory effects of melatonin on mammalian circadian time-keeping and its sleep-inducing effects

Melatonin receptors are differently expressed in different tissues (SCN, hippocampus, cerebellum, medulla, midbrain, neocortex, hypothalamus)

physiological significance of melatonin receptors in some brain regions is still unknown

© 2022 Dr. Cathy Stern, OD, FCOVD, FNORA, FCSO

12

Melatonin

Melatonin protects against oxidative stress

- Free radical scavenger

- Stimulates the synthesis of antioxidative enzymes

- Inhibits activity of free radical generating enzymes

- Protects nuclear DNA from oxidative damage

Exogenous melatonin is a zeitgeber to synchronize circadian rhythm and promote sleep onset

Melatonin production is inhibited by even low levels of light

© 2022 Dr. Cathy Stern, OD, FCOVD, FNORA, FCSO

13

Melatonin

Melatonin can be used to improve sleep parameters in patients suffering from insomnia

- Circadin is a drug that is a prolonged release melatonin

 - it is used in Europe for treatment of insomnia >age 55

- Hetlioz (tasamelteon) by Vanda is used to treat non-24 sleep-wake disorder

 - it is a melatonin receptor agonist, used in blind > age 16

These medications are generally taken several hours before sleep

Take care re indiscriminate use – beverages, OTC with lack of quality control

© 2022 Dr. Cathy Stern, OD, FCOVD, FNORA, FCSO

14

14

Melatonin and Alzheimer's Disease (AD)

Melatonin decreases during aging

Patients with AD have a more profound reduction in melatonin

Melatonin supplementation

- improves sleep

- ameliorates sundowning (greater late day agitation)

- slows the progression of cognitive impairment

© 2022 Dr. Cathy Stern, OD, FCOVD, FNORA, FCSO

15

Circadian Rhythm

Effect on all body systems

- metabolism/weight – regulation of blood sugar and cholesterol

- mental health – depression, bipolar disorder

- dementia and other neurodegenerative diseases

- DNA repair – prevents cancer

- influences the effectiveness of anti-cancer drugs

© 2022 Dr. Cathy Stern, OD, FCOVD, FNORA, FCSO

16

16

Disruptions to Circadian Rhythm

Jet Lag

- pre-flight phase advance for eastward travel

- pre-flight phase delay for westward travel

Shift Work

- fundamental misalignment between the circadian rhythm of the endogenous biological clock and the timing of the sleep/wake cycle

- this misalignment increases the risk of workplace accidents/injuries

© 2022 Dr. Cathy Stern, OD, FCOVD, FNORA, FCSO

17

17

Disruptions to Circadian Rhythm

Advanced Sleep Phase Disorder (rare)

- seen in elders in nursing facilities

- use evening light therapy to delay the sleep phase

Delayed Sleep Phase Disorder – 16% of teens

- delayed bedtime and impaired ability to wake early

- advance the circadian rhythm with 2500 lux white light x 2h early AM and restrict light after 4pm

Non-24 Sleep-Wake Disorder – primarily in blind individuals

- sleep hours shifted backward (min/hours)

© 2022 Dr. Cathy Stern, OD, FCOVD, FNORA, FCSO

18

18

Disruptions to Circadian Rhythm

Irregular Sleep-Wake Rhythm Disorder

- no consistent pattern to sleep
- person naps or sleeps for short periods
- frequently connected to brain disorders such as dementia and traumatic brain injury

© 2022 Dr. Cathy Stern, OD, FCOVD, FNORA, FCSO

19

19

How to Maintain a Healthy Circadian Rhythm

- 2 hours of sunlight in the morning

- Daily exercise

- Avoid caffeine especially after noon time

- Limit light before bed

- Consistent sleep schedule / darkened room

- Use yellow/red/orange/amber light at bedside or nightlights

- Think about circadian effective light

 - blue in the morning (red light has no effect on circadian clock)

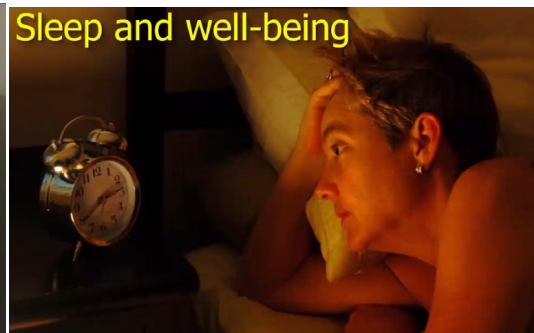
© 2022 Dr. Cathy Stern, OD, FCOVD, FNORA, FCSO

20

20

Why Should We Illuminate

Visual performance and Sleep and well-being



Good lighting can do both and still be energy efficient

© 2022 Dr. Cathy Stern, OD, FCOVD, FNORA, FCSO

21

21

The International Day of Light

The International Day of Light is held on May 16 – Why May 16th

It is the anniversary of the first successful operation of the laser in 1960 by physicist and engineer, Theodore Maiman. The laser is a perfect example of how a scientific discovery can yield revolutionary benefits to society in communications, healthcare and many other fields.

The International Day of Light is not just about lasers and science. It also encompasses the fields of art, culture, and entertainment –

Everywhere that light is present!

In 2022, May 16th was the full moon

© 2022 Dr. Cathy Stern, OD, FCOVD, FNORA, FCSO

22

22